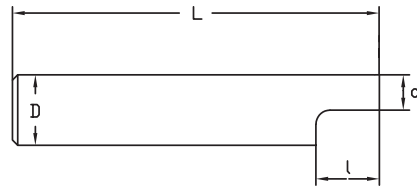


# 210

Burins

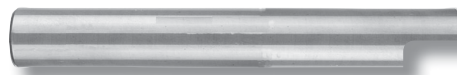
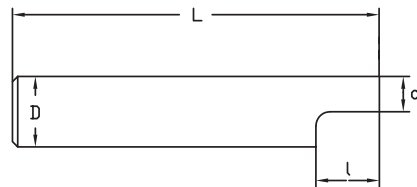


MG  
Co10

D h7	d	L	l						210			HMO uncoated
3	1,5	100	4						210030			●
4	2	100	5						210040			●
5	2,5	100	7						210050			●
6	3	100	8						210060			●
7	3,5	100	8						210070			●
8	4	100	10						210080			●
9	4,5	100	10						210090			●
10	5	100	13						210100			●
12	6	100	16						210120			●
14	7	100	18						210140			●
16	8	110	20						210160			●

# 220

Burins



MG  
Co10

D h7	d	L	l						220			HMO uncoated
3	1,5	150	4						220030			●
4	2	150	5						220040			●
5	2,5	150	7						220050			●
6	3	150	8						220060			●
7	3,5	150	8						220070			●
8	4	150	10						220080			●
9	4,5	150	10						220090			●
10	5	150	13						220100			●
12	6	150	16						220120			●
14	7	150	18						220140			●
16	8	150	20						220160			●

ALTRE

FSB

PSV

V Plus

ALR

PCC

UTP

LIME

BAR